



# Airtame 3 + Core



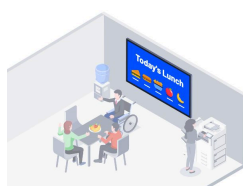
## Turn every **screen** into a **communication tool**

**Airtame 3** makes it easy to **share your screen** and show relevant **signage** content – without switching inputs or plugging in cables. The Airtame device connects to any display via HDMI and **supports Power over Ethernet (PoE+)** for a stable, hardwired setup.

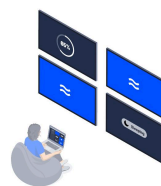
Built for shared spaces like classrooms, meeting rooms, and common areas, Airtame 3 gives teams a consistent way to present and communicate. You can **manage screens remotely** through Airtame Cloud, push out updates, and schedule content across locations.



Screen sharing



Digital signage

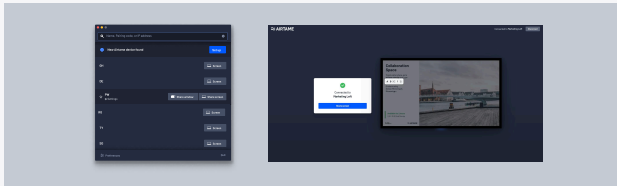


Remote management



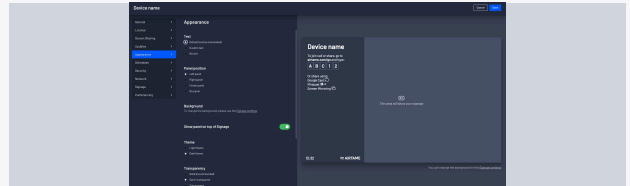
Emergency alerts

# Software Specifications



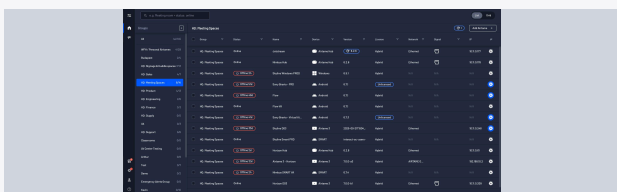
## Screen sharing

- Screen share from any device, Laptop, tablet, or phone
- Share browser tab, window, or whole screen
- Share directly from the browser without an app
- Native protocols (Miracast, AirPlay, Google Cast)
- Video and Audio sharing



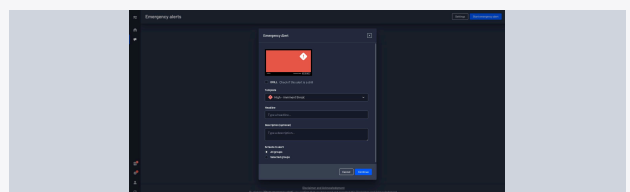
## Digital signage

- Make playlists of 3rd party signage content
- Integrations to Google Slides, PowerPoint, Canva, Power BI, and many more
- Customize the home screen with meeting room status and instructions for sharing
- Schedule content to appear at certain times
- Support vertical aspect ratios



## Remote management

- Access Airtame screens from anywhere in the world
- Schedule power management and automatic firmware updates
- Troubleshoot signage using live view of the screen
- Organize Airtame screens in groups
- Receive device alert when devices go offline



## Emergency Alerts

- Interrupt screens sharing and video calls with emergency alerts
- Supported with APIs for easy integration to CAP and custom setups
- Already works with Raptor, CrisisGo, InformaCast, Omnilert, and more...
- Show custom "All clear" messages when the emergency is over
- Trigger using Airtame Cloud

Hardware

Specifications

Model Number: AT-DG3-CORE-3Y

Ports

HDMI	2 x HDMI 2.0 (4K 60Hz)
USB-A	2 x USB-A 3.0
USB-C	1 x USB-C 3.1 Gen 2 (DP, PD, and Data) 1 x USB-C Power port
Ethernet	1 x Gigabit Ethernet with PoE+ support
Security	Kensington lock

Interface

Ethernet:	1 Gigabit
WiFi:	802.11ax, Tri-Band - 2,4 GHz / 5 GHz
Bluetooth:	5.3

Software

Operating System:	Airtame OS (Linux-based)
Device Management:	Airtame Cloud

Environment

Ambient Operatating Temperature:	0 to 45 °C (32 to 113 °F)
Operating Altitude:	0 - 2000 MSL
Power Consumption at Idle	4.5-5W

Power Input

PoE IEEE 802.3st Type 2 PoE+ (RJ45 Connector)
42.5-57V ≈ min 30W
USB-C PD - 20V
1.5A ≈ 30W

Security

Web/Cloud Transport Encryption:	TLS
Device APU Security:	With password (SRP)
Streaming Encryption:	AirPlay, Miracast, GoogleCast
Conferencing Encryption:	TLS. WebRTC
Physical Security:	Custom tamper-proofing, Kensington lock compatible

Device Dimensions

Width:	130.0 mm (5.12 in)
Depth:	85.0 mm (3.35 in)
Height:	36.5 mm (1.44 in)
Weight:	335 grams (12 ounces)

Box Dimensions

Width:	268.0 mm (10.55 in)
Depth:	169.0 mm (6.65 in)
Height:	95.0 mm (3.74 in)
Weight:	1210 grams (43 ounces)

Warranty

Hardware:	3 years
-----------	---------

What's in the box

Airtame 3 device	30W USB-C power adapter	Regional IEC C7 cable	5ft HDMI 2.0 Cable	6x adhesive strips	User Manual
					