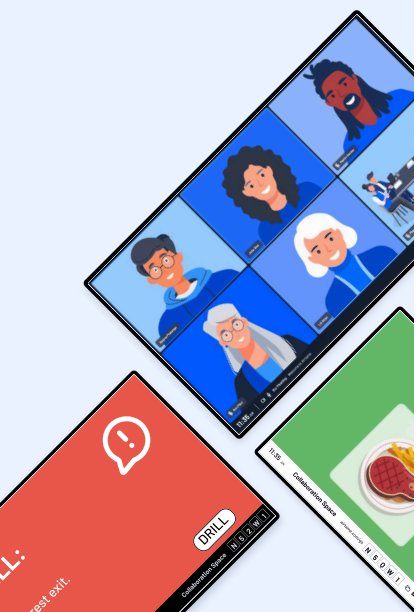


≈ AIRTAME

# Product overview Business

[airtame.com](https://airtame.com)



	<b>New</b>				
	<b>Airtame Go</b>	<b>Airtame 3 Core</b>	<b>Airtame 3 Hybrid</b>	<b>Core</b>	<b>Hybrid</b>
	<b>\$499</b> per screen 3-year term	<b>\$749</b> per screen 3-year term	<b>\$1299</b> per screen 3-year term	<b>\$120</b> per screen 1-year term	<b>\$300</b> per screen 1-year term

	Airtame Go	Airtame 3 Core	Airtame 3 Hybrid	Core	Hybrid	
<b>Specs</b>	Processor	★★★	★★★★★	★★★★★	★★★★★	
	Connectivity	Ethernet with included adapter (recommended) or WiFi 6E	<b>Built in</b> Ethernet / PoE+ or WiFi 6E	<b>Built in</b> Ethernet / PoE+ or WiFi 6E	HW dependent	HW dependent
	WiFi security	WiFi WPA/WPA2/WPA3- <b>Personal</b>	WiFi WPA/WPA2/WPA3- <b>Enterprise</b>	WiFi WPA/WPA2/WPA3- <b>Enterprise</b>	HW dependent	HW dependent
	Max resolution (screen sharing & signage)	4K	4K	4K	Up to 4K	Up to 4K
<b>Screen sharing</b>	Screen sharing 	★★★★★	★★★★★	★★★★★	★★★★★	★★★★★
	Wireless casting protocols 	On the roadmap	Launching soon	Launching soon	Launching soon	Launching soon
	Bluetooth discovery	Launching soon	Launching soon	Launching soon	Launching soon	Launching soon
	Select 'Screen/Airtame' by name (Multicast)	On the roadmap	✓	✓	On the roadmap	On the roadmap
<b>Signage &amp; alerts</b>	Signage & performance	★★★★	★★★★★	★★★★★	★★★★★	★★★★★
	Emergency alerts	✓	✓	✓	✓	✓
<b>Management</b>	Remote management	✓	✓	✓	Limited	Limited
	Reboot & sleep schedule (CEC support)	✓	✓	✓	✗	✗
	Automatic firmware updates	✓	✓	✓	✗	✗
	Bluetooth WiFi setup	✗	✓	✓	✗	✗
	Zero-touch-deployment	✓	✓	✓	✓	✓
<b>Conferencing</b>	Dual screen support	✗	✓	✓	✗	✗
	Video conferencing	✗	✗	✓	✗	✓